



UNIVERSITÄT GREIFSWALD
Wissen lockt. Seit 1456



At the Heart of Europe



Where Leisure and Research Converge



Leisure & relaxation



Historical heritage



Unique natural landscapes



Sun & sea

University & Hanseatic Town of Greifswald



Historic Old Town characterised by Brick Gothic architecture



Maritime atmosphere in the “Museum Harbour”



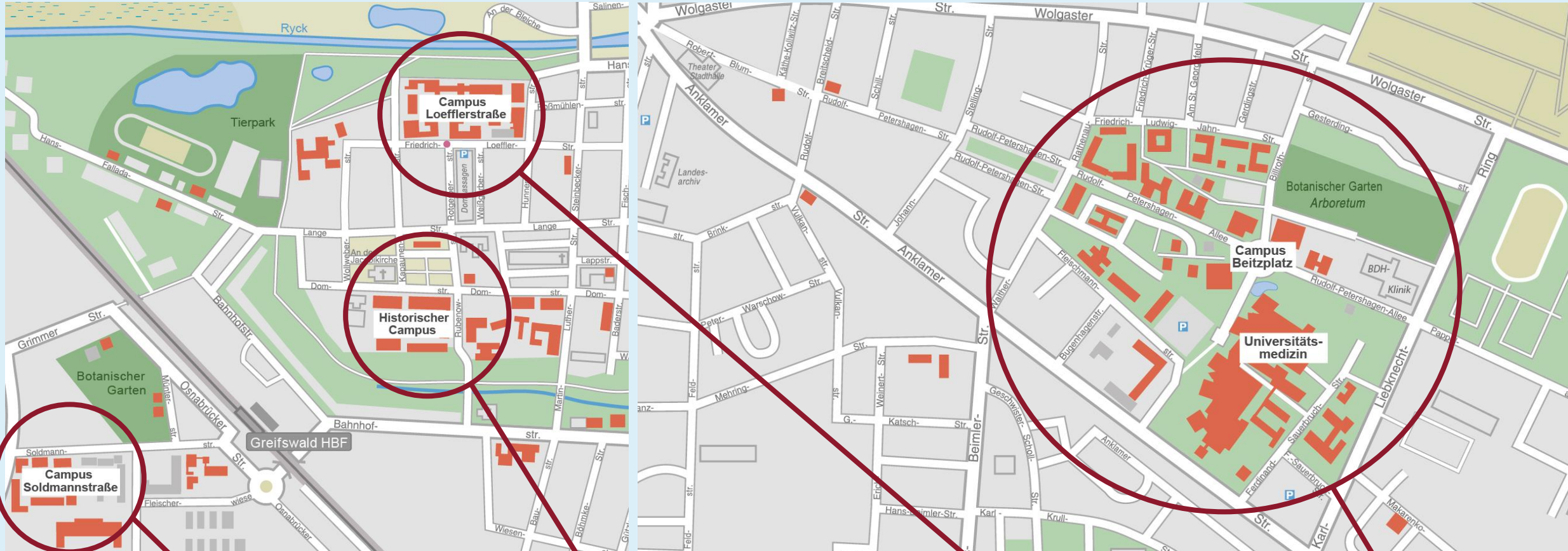
Lively culture scene with a theatre, museum & festivals



Student and bicycle town

The Town is the Campus

131 buildings spread throughout the town, short distances



History of the University

- 17/10/1456** ● Founding of the university on the initiative of Greifswald's mayor, Heinrich Rubenow
- 1634** ● Donation of the Eldena District by Pomeranian Duke Bogislav XIV (24 villages with 14,000 hectares of farmland)
- 1648 – 1815** ● Pomeranian State University under Swedish rule
- 1750** ● Inauguration of today's University Main Building in the Domstraße
- 1815 – 1933** ● Erection of today's Historic Campus with the former Audimax during the Prussian Period
- Around 1900** ● Construction of numerous new university buildings and one of the most modern hospitals in the world
- 1933 – 1945** ● Gleichschaltung by the Nazis and involvement in military research
- 1946 – 1990** ● Involvement in the SED's socialist education policy
- 1990 – 1995** ● Restoration of the autonomy of research and teaching
- 2013** ● Election of the first female Rector, after 351 male Rectors
- 2022** ● Election of the first student Pro-Rector

University Governance 2023



Pro-Rector

Staff Development
Organisation
Diversity



Annelie Ramsbrock

Pro-Rector

Research
Transfer
Digitisation



Ralf Schneider

Rector



Katharina Riedel

Registrar



Juliane Huwe

Pro-Rector

Teaching
Teacher education
Internationalisation



Dorte Hartmann

Pro-Rector

Student affairs



Hennis Herbst

Historical Gems



Institute of Anatomy



Department of Law



Department of History



Former Institute of Physics



Aula in the University Main Building



Old University Library (Gropius building)

Numbers & Facts (incl. University Medicine Greifswald)



10,356

Students

239

Professors
(28 % female)

1,986

Academic Staff

3,721

Non-academic Staff

1,349

Graduates

5

Faculties

3 (2+1)

Research Facilities
of nat. importance

€ 64.4 m

External funding

34

University
partnerships

201-250

THE Ranking²⁰²³
(Life Sciences)

No. 36

THE Ranking²⁰²³
(German Universities)

9,000 ha (2)

Land (Dachshunds)

Finances and Land Ownership

Basic allocation State of MV (annual)

- approx. € 70 m (UG) + approx. € 63 m (UMG)

Expenditure of external funding (2023)

- € 64.4 m (UG + UMG)

Land

- Approx. 9,000 ha land,
of which 3,000 ha forest
- Tenants (mostly) members of the
Greifswalder Agrarinitiative



Shaping the Future: Sustainable Uni

Sustainability in Studies and Teaching

Central topics:

- Ecosystems
- Climate change
- Social aspects of sustainable development

Research for Sustainability

- More than 80 research projects on sustainability
- Interdisciplinary collaboration with the Greifswald Mire Centre, the Michael Succow Foundation and others
- Sustainability Prize for dissertations and doctoral theses





Sustainable Campus &

Sustainable Corporate Management

**Sustainability Officer
& Sustainability Committee**

**Number 1 university town for cycling
(CHE Ranking)**

**Energy-efficient building refurbishment
sustainable procurement**

**Membership in Greifswald Sustainability
Alliance & Agricultural Initiative, establishment
of the climate protection forest Eldena...**



Medium-Sized University with Five Faculties



Faculty of Mathematics and Natural Sciences

Life sciences, physics & mathematics, geology & geography, pharmacy, psychology, data science

Faculty of Arts and Humanities

Language & literature, history & philosophy, politics & communication, music & art, teaching qualification

Faculty of Law and Economics

Law, business administration and economics, health care management

Faculty of Theology

Protestant religious education, protestant theology

University Medicine

Human medicine, dentistry, clinical nursing science



Undergraduate Degree Courses



DIPLOM

(one-subject degree course)
Sacred Music

BACHELOR OF ARTS (B.A.)

(two-subject degree course + optional studies)
English and American Studies • Baltic Studies
Business Administration • German as a
Foreign Language • Finnish Studies • German
Studies • History • Communication Studies
History of Art • Music • Musicology
Public Law • Philosophy
Political Science • Scandinavian Studies
Slavonic Studies • Economics

BACHELOR OF SCIENCE (B.Sc.)

(one-subject degree course)
Business Administration • Biochemistry • Biology
Biomathematics • Geography • Geology
Human Biology • Clinical Nursing Science
Landscape Ecology and Nature Conservation
Management and Law • Mathematics
Mathematics with Computer Science • Physics
Psychology • Environmental Sciences

STAATSEXAMEN (STATE EXAMINATION)

(one-subject degree course)
Human Medicine • Pharmacy • Law
(1st *Juristische Staatsprüfung*) • Dentistry

CHURCH EXAMINATION/MAGISTER

Protestant Theology

PRIMARY EDUCATION (teaching qualification)

(four-subject degree course)
German and Mathematics (compulsory) • Natural and Social
Sciences (recommended) • Alternatively: Polish
or Low German • Fourth subject to be chosen from:
English • Protestant Religious Education • Art and Design
Low German • Practising Philosophy with Children • Polish

SECONDARY EDUCATION FOR

GYMNASIUM (teaching qualification for up to year 12)

(two-subject degree course)
German • English • Protestant Religious Education
Geography • History • Art and Design • Mathematics •
Philosophy • Physics
Polish • Russian

SECONDARY EDUCATION FOR REGIONALE SCHULEN (teaching qualification for up to year 10)

(two-subject degree course)
German • English • Protestant Religious Education
Geography • History • Art and Design
Philosophy • Polish • Russian

THIRD SUBJECTS for TEACHING QUALIFICATIONS

(only in combination with another language)
Danish • Norwegian • Swedish

SUBSIDIARY SUBJECTS for TEACHING QUALIFICATIONS

Bilingual Teaching and Learning • German
German as a Foreign and Second Language
English • Protestant Religious Education
Geography • History • Art and Design
Mathematics (only Secondary Education for
Gymnasium) • Low German • Philosophy
Polish • Russian

Double Degree

Binational German-Polish teacher training degree

Master's Degree Courses

MASTER OF ARTS (M.A.)

(one-subject degree course)

Fine Arts • German Literature Studies • History • History and Culture of the Baltic Sea Region • Culture - Interculturality - Literature • History of Art
Organisational Communication • Philosophy • Political Science
Language and Communication • Language Diversity

Master of Science (M.Sc.)

(one-subject degree course)

Business Administration • Biochemistry • Biodiversity, Ecology & Evolution
Bioeconomy • Biomathematics • Earth Sciences • Health Care Management
Human Biology • Infection Biology & Immunology • Landscape Ecology and Nature Conservation • Mathematics • Medical Physics • Molecular Biology and Physiology • Sustainability Geography • Physics • Psychology
Regional Development and Tourism • Environmental Sciences

Full/ or part-time studies

Master of Theological Studies

– Degree courses taught in English





Suche



Wegweiser

Philosophische Fakultät

UNIVERSITÄT GREIFSWALD
Wissen lockt. Seit 1456



UNIVERSITÄT GREIFSWALD
Wissen lockt. Seit 1456



FAKULTÄT

STUDIUM

INSTITUTE

FORSCHUNG

VERANSTALTUNGEN

Philosophische Fakultät



Philosophische Fakultät

Dekanat

Ernst-Lohmeyer-Platz 3

17489 Greifswald

Tel.: +49 3834 420 3001

Fax: +49 3834 420 3002

✉ dekanphf@uni-greifswald.de



Suche



Wegweiser

Institut für Slawistik

UNIVERSITÄT GREIFSWALD
Wissen lockt. Seit 1456



INSTITUT

MITARBEITENDE

STUDIUM

FORSCHUNG

VERANSTALTUNGEN

IFZO (Interdisziplinäres For-
schungszentrum
Ostseeraum)

DFG-Graduiertenkollekt
Peripities. Narratives
formations, Revolution
Catastrophes"

[Institut für Slawistik](#) > [Mitarbeitende](#) > Lehrstuhl für Ukrainische Kulturwissenschaft > JProf. Dr. Roman Dubasevych

▼ JProf. Dr. Roman Dubasevych

> BMBF-Projekt UNDIPUS

> ZiWiss



JProf. Dr. Roman Dubasevych

Lehrstuhlinhaber

Lehrstuhl für Ukrainische Kulturwissenschaft

Ernst-Lohmeyer-Platz 3, Raum E. 62

17487 Greifswald

Tel.: +49 (0)3834 420 3233

✉ roman.dubasevych@uni-greifswald.de

Motor for the Town & Region



Cultural and Music Festivals



Science Day



Tours



Botanical Garden



University Children's Day



University in the Region



NORDISCHER KLANG

The cultural association **Nordischer Klang e.V.** is closely connected with the Institute for Finnish and Scandinavian Studies at the University of Greifswald and has been organizing the cultural festival **Nordischer Klang** in the Hanseatic and university city of Greifswald every year in May for about 10 days together with numerous local cooperation partners and cultural institutions.

As the biggest annual cross-genre festival in Germany, which focuses on Scandinavian and Nordic music, art and literature, **Nordischer Klang** has a great impact in the region. At the festival around 40 events such as concerts, readings, film screenings, scientific contributions, stage art, exhibitions, panel discussions, a family program and workshops attract up to 10,000 visitors each year.

<https://nordischerklang.de/nordischer-klang/>

PolenmARkt

Institut für Slawistik, Lehrstuhl für Slawische Literaturwissenschaft

<https://polenmarkt-festival.de/>



GREIFSWALDER BACH WEEK

The Greifswald Bach Week is the **annual "Festival of Sacred Music in the North"**. For one week in June, numerous concerts, cantata services and other events take place in Greifswald and the surrounding area.

Within the framework of annually changing thematic focuses, both the great choral works of Johann Sebastian Bach and chamber music works are performed. In addition, performances of works by composers from all eras highlight Bach's extensive legacy.

The Greifswald Bach Week was established in 1945, making it the oldest music festival in Mecklenburg-Vorpommern. The festival is sponsored by the Pomeranian Protestant Church and the University of Greifswald in cooperation with the state of Mecklenburg-Vorpommern, the Hanseatic City of Greifswald and the Greifswald church district. Cooperation partners include Norddeutscher Rundfunk and Sparkasse Vorpommern.

<https://phil.uni-greifswald.de/veranstaltungen/kulturelle-veranstaltungen/bachwoche/>

Modern Research Infrastructure



Center of Drug Absorption and Transport (C_DAT)



Center for Functional Genomics of Microbes (C_FunGene)



University Computer Centre (URZ)



University Medicine Greifswald (UMG)



Central University Library



William B. Kannel Center for Community Medicine (under construction)



Interdisciplinary

Cutting-Edge Research

Research-strong university with five key fields of research

- **Community Medicine and Individualized Medicine**
- **Environmental Change: Responses and Adaptation**
- **Infections, Microbial Ecology & Biotechnology**
- **Baltic Sea Region Research**
- **Plasma Physics**





- finding solutions for major societal challenges:
 - *health & preventive medicine,*
 - *environment & climate,*
 - *energy & raw materials and*
 - *chances & risks of globalisation*
- being attractive for excellent researchers of all career stages
- encouraging new research ideas
- intensifying collaborations with external research institutions
- strengthening the regional economy by research and technology transfer



- Research consortium, since 2011, working together on the topic **RURALITY**
- Various disciplines involved: *medicine, psychology, health economics, economics and criminology, political science, geography and theology.*
- In the consortium, joint projects of basic research on rural areas as well as applied cooperation are planned and carried out. The research groups have developed a number of practical solutions in their work, such as the Community Medicine Nurse, De Führn Dokter, transport infrastructure projects, training concepts, prevention programs for rural areas or projects for social rural development.

Topics

- Health services research and epidemiology
- Clinical epidemiological and molecular epidemiological research for abdominal, metabolic, and cardiovascular diseases, infection and inflammation
- Community medicine methods
- Preventive medicine, addiction and risk behaviour



Environmental Change: Responses & Adaptation



Topics

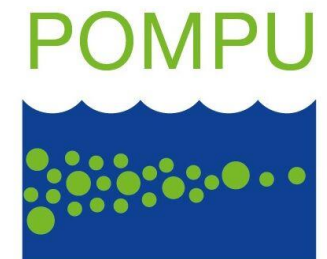
- Adaptation to changing environments
- Biodiversity
- Evolution
- Georesources
- Sustainability
- Conservation
- Ecosystems research
- Biogeochemical cycles
- Environmental science
- Earth's future





Topics

- Molecular mechanisms in the interaction between pathogen and host
- Structure and function of terrestrial and aquatic microbiomes
- Environmentally friendly production of chemicals and pharmaceuticals
- Development of proteomics methods



Baltic Sea Region Research



Topics

- Cultural exchange, cultural and mental borders and borderlands, narratives
- Comparison of legal systems in Baltic Sea region and Europe
- Language diversity and status of minority languages
- Sustainable coastal and land management
- Development & infrastructure of rural regions



Interdisziplinäres
Forschungszentrum
Ostseeraum
Interdisciplinary Centre for
Baltic Sea Region Research

**INNOVATION &
Strukturwandel**



BALTIC PERIPETIES
Narratives of Reformations,
Revolutions and Catastrophes



Bundesministerium
für Bildung
und Forschung



Mecklenburg-Vorpommern
Ministerium für Wissenschaft,
Kultur, Bundes- und
Europaangelegenheiten

**Research Centre for
Manors in the
Baltic Sea Region**

**Deaths linked to
escape attempts
across the Baltic Sea**

Plasma Physics

Topics

- Properties of complex plasmas and high-temperature plasmas
- Dense plasmas, strong correlations and collective effects in radiation fields: Coulomb Systems, clusters and particles
- Plasma technology and use of plasmas in medicine and (food) hygiene



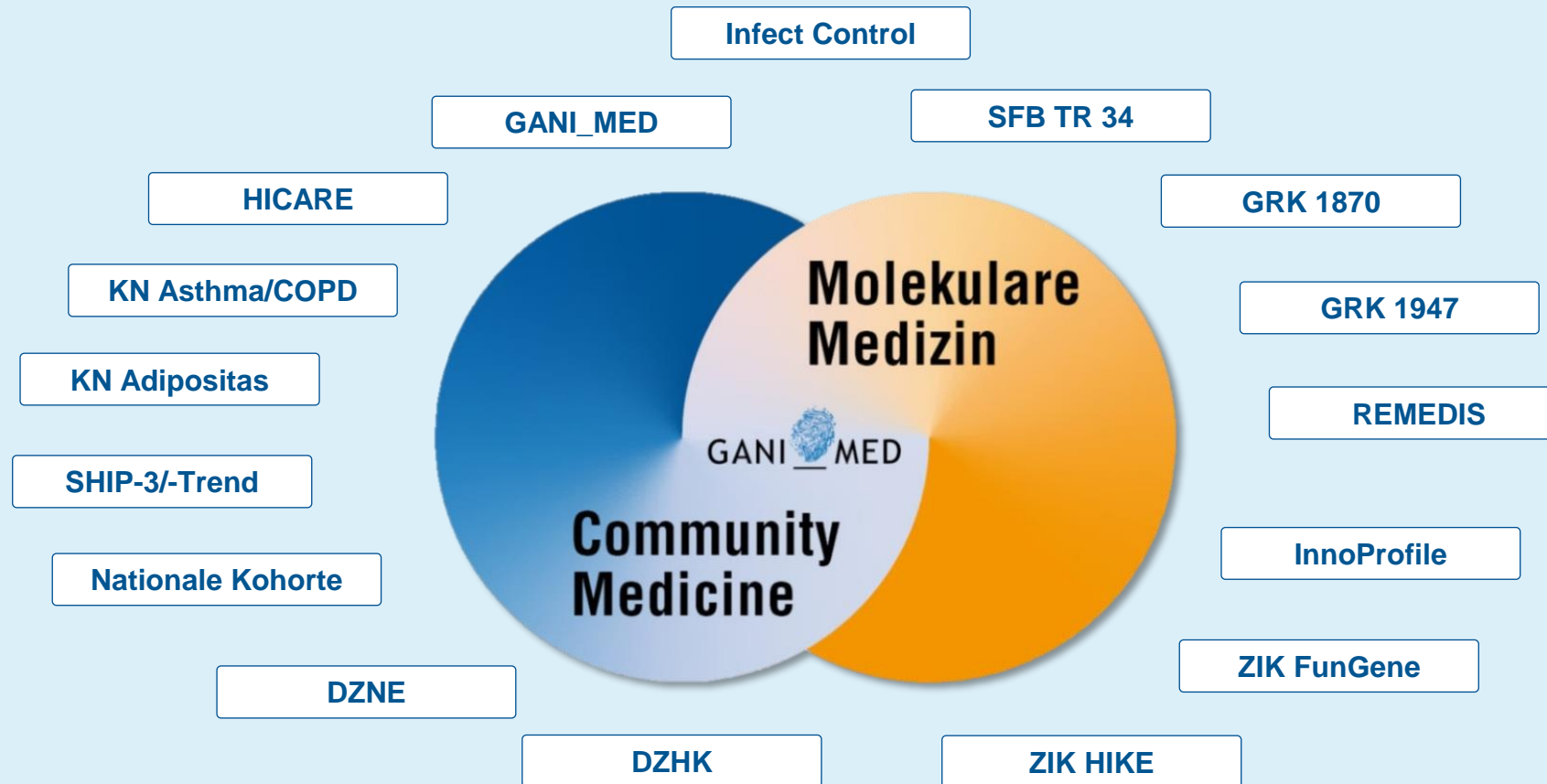
MAX-PLANCK-INSTITUT
FÜR PLASMAPHYSIK





- modern and compact infrastructure, life science campus with 21 departments and 17 institutes
- extensive quality-management and constant evaluation
- 3,300 employees (83 professors, 484 physicians, 721 nursing staff, 995 technical staff, 382 administrative staff)
- 1,244 medical-students / 560 nursing students
- Landeszuführungsbetrag FuL 53,59 Mio. Euro







Join Us to Optimize Health Through Cohort Research

Crowdsourcing enhancing cohort studies research

- Group of similar people who differ in respect of a certain characteristic are followed over time and compared for a particular outcome. These powerful observational studies are being used to help address key research questions today.
- Responsible Research and Innovation (RRI) & crowdsourcing – a concept whereby social actors contribute to research via sharing their views and experiences – for the promotion of inclusive innovation and citizen engagement in cohort research.

<https://cordis.europa.eu/project/id/101006518>

https://www.youtube.com/watch?v=U949IS_P-M

Wissenschaftsregion NordOst



UNIVERSITÄT GREIFSWALD
Wissen lockt. Seit 1456



Universitätsmedizin
GREIFSWALD



FRIEDRICH-LOEFFLER-INSTITUT

FLI

Bundesforschungsinstitut für Tiergesundheit
Federal Research Institute for Animal Health

MAX-PLANCK-INSTITUT
FÜR PLASMAPHYSIK



HOCHSCHULE
NEUBRANDENBURG
University of Applied Sciences



34 Partner Universities Worldwide

(including universities in Australia, Canada,
Japan, South Korea, USA, Ukraine and Vietnam)

12 %

International staff

Internationalisation Strategy

2022–2030

194

Erasmus partnerships in

28 European countries

8.1 %

International students from

99 Countries





One-Health-Region Western Pomerania

T!Raum One Health





From a dream (Traum) to the T!Raum

What do we dream of?

- Healthy people - in a healthy environment - with healthy relationships.
- "Health is a state of complete physical, mental and social well-being and not merely the absence of disease or infirmity" (WHO 1948).

Health is

- much more than medicine ...
- the responsibility of the whole community...
- a multifactorial process that also includes environment, relationships, agriculture, tourism, economy, politics, civil society, etc.



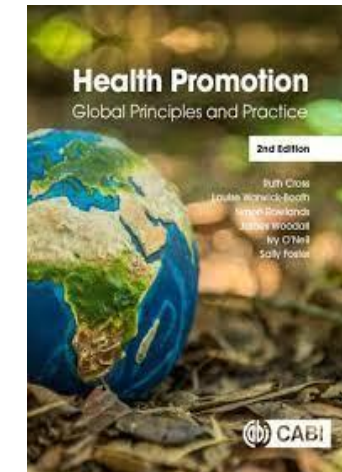
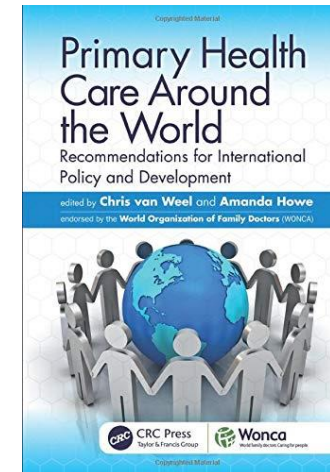
Why do we need T!Raum?

Previous approaches:

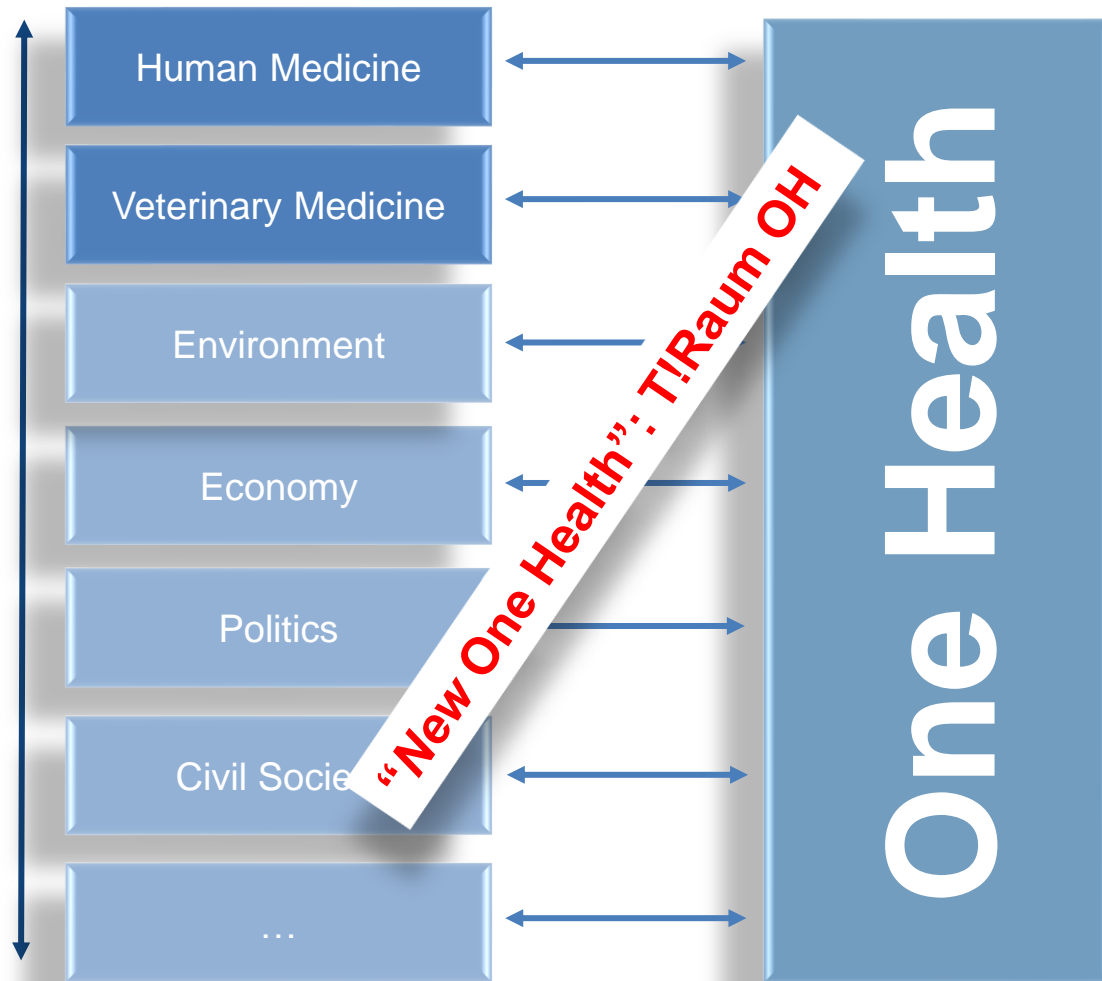
- Strictly administrative!
- Alma Ata (*Primary Healthcare*)
- Ottawa Charter (*Health Promotion*)

Fragmented health

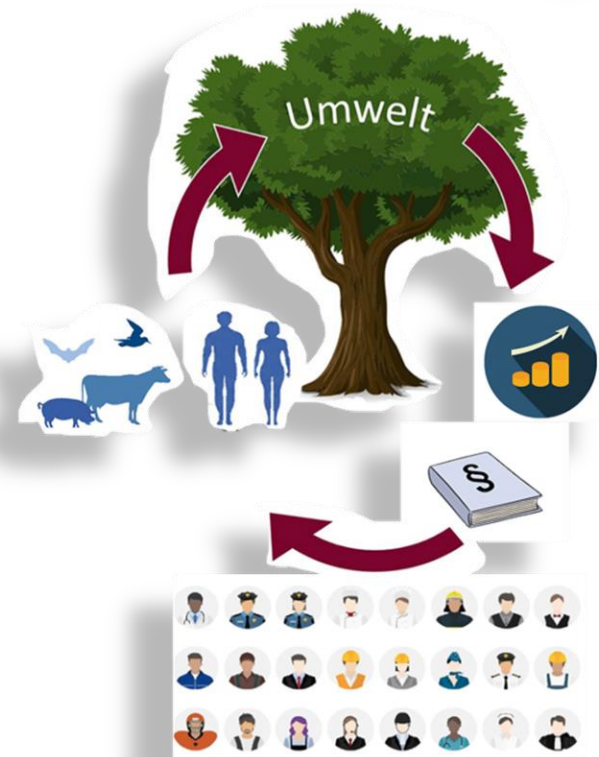
- Human medicine
- Veterinary Medicine
- Environment
- Economics...



Our answer: T!Raum One Health! (*Health Promoting Region*)



T!Raum One Health Region



From a research concept to a regional development strategy



One Health High Level Expert Panel (OHHLEP)

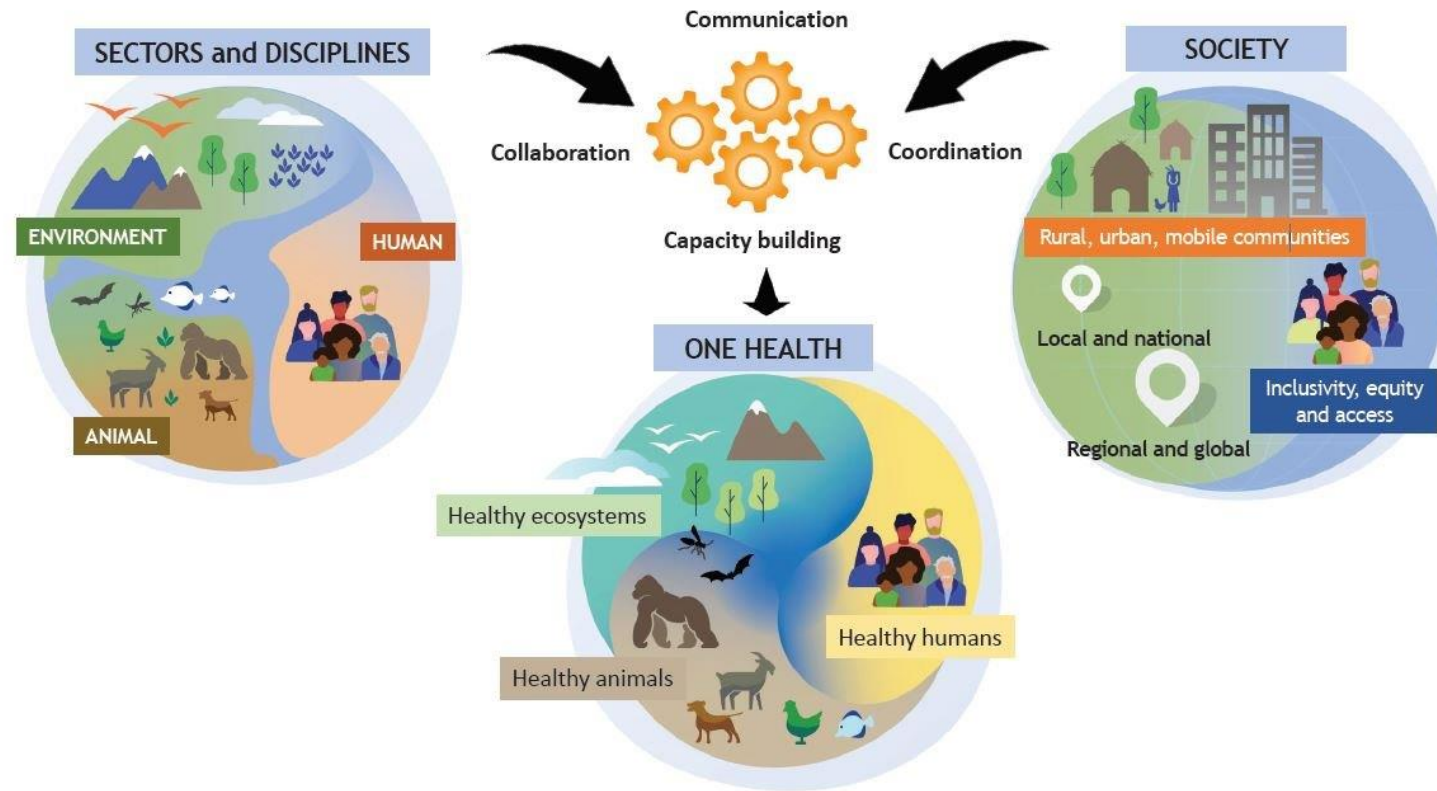
- One Health is a collective, unifying approach that aims sustainably balance and optimize human, animal, and ecosystem health.
- It recognizes that the health of people, domestic and wild animals, plants, and the broader environment (including ecosystems) are intimately connected and interdependent.
- The approach mobilizes diverse sectors, disciplines, and communities at different levels of society to work together to promote well-being and address threats to health and ecosystems, while meeting collective needs for clean water, energy, and air, and safe and nutritious food; taking action on climate change; and contributing to sustainable development.

PLOS PATHOGENS

OPINION

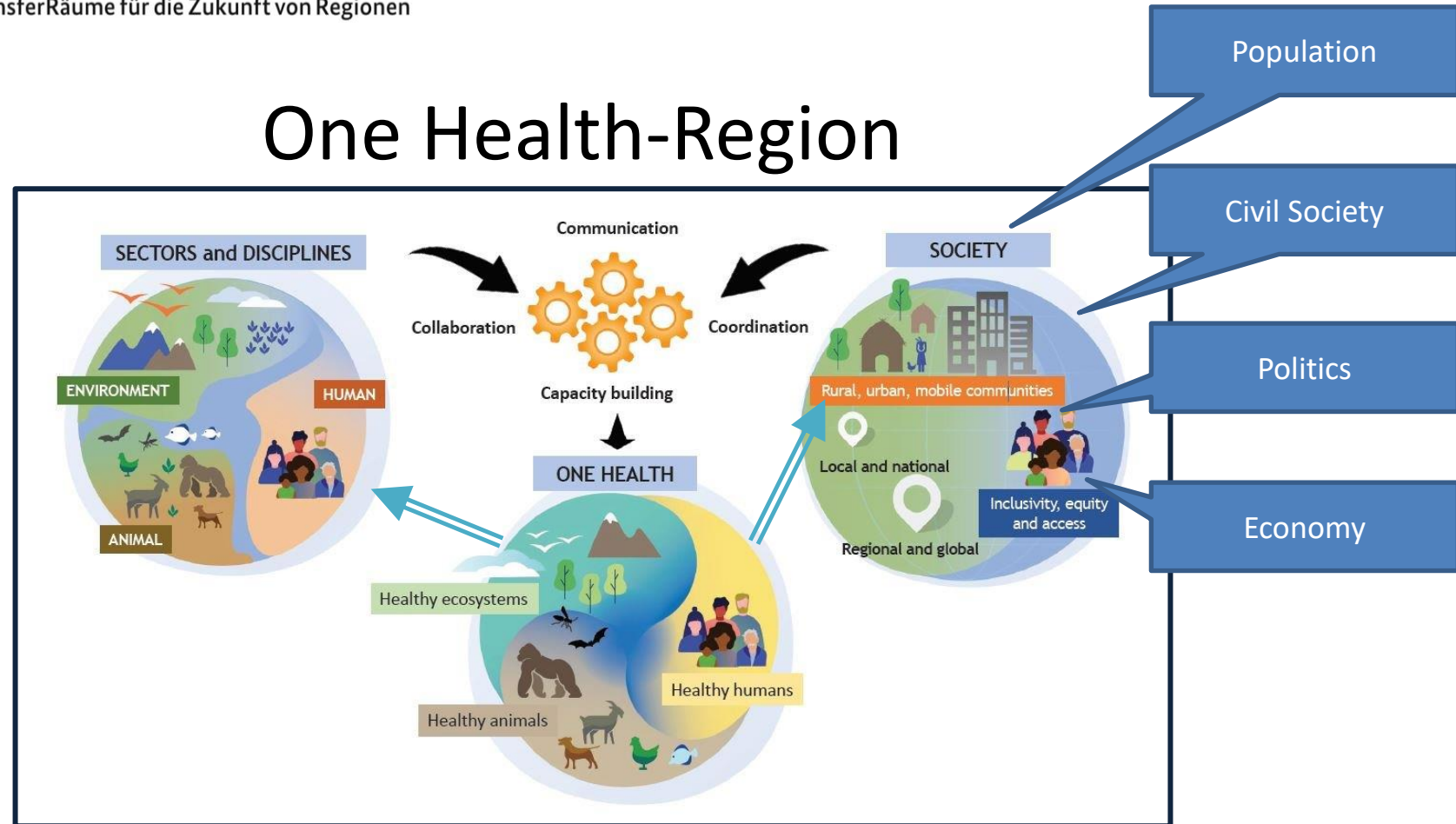
One Health: A new definition for a sustainable and healthy future

One Health High-Level Expert Panel (OHHLEP), Wilu B. Adisasmito¹, Selama Almahairi², Casey Barton Behreves³, Pipi Bilivoga⁴, Solome A. Bukachi⁵, Natalia Casas⁶, Natalia Codell Becerra⁷, Dominique F. Charon⁸, Abhishek Choudhary⁹, Janice R. Ciacci Zanillo¹⁰, Andrew A. Cunningham¹¹, Osman Dar^{12,13}, Nitish Debnath¹⁴, Bapistsa Dunge^{15,16}, Etroubalisher Fany¹⁷, George F. Gao¹⁸, David T. S. Hayman¹⁹, Margaret Khatsa²⁰, Marion F. G. Koopmans²¹, Catherine Machababa²², John S. Mackenzie^{23,24}, Wanda Markotter²⁵, Thomas C. Mettenleiter²⁶, Serge Morand²⁷, Vyacheslav Smolenskiy²⁸, Lei Zhou²⁹



One Health High-Level Expert Panel (OHHLEP), Adisasmito WB, Almuhairi S, Behravesh CB, Bilivogui P, Bukachi SA, et al. (2022) [One Health: A new definition for a sustainable and healthy future](https://doi.org/10.1371/journal.ppat.1010537). PLoS Pathog 18(6): e1010537. <https://doi.org/10.1371/journal.ppat.1010537>

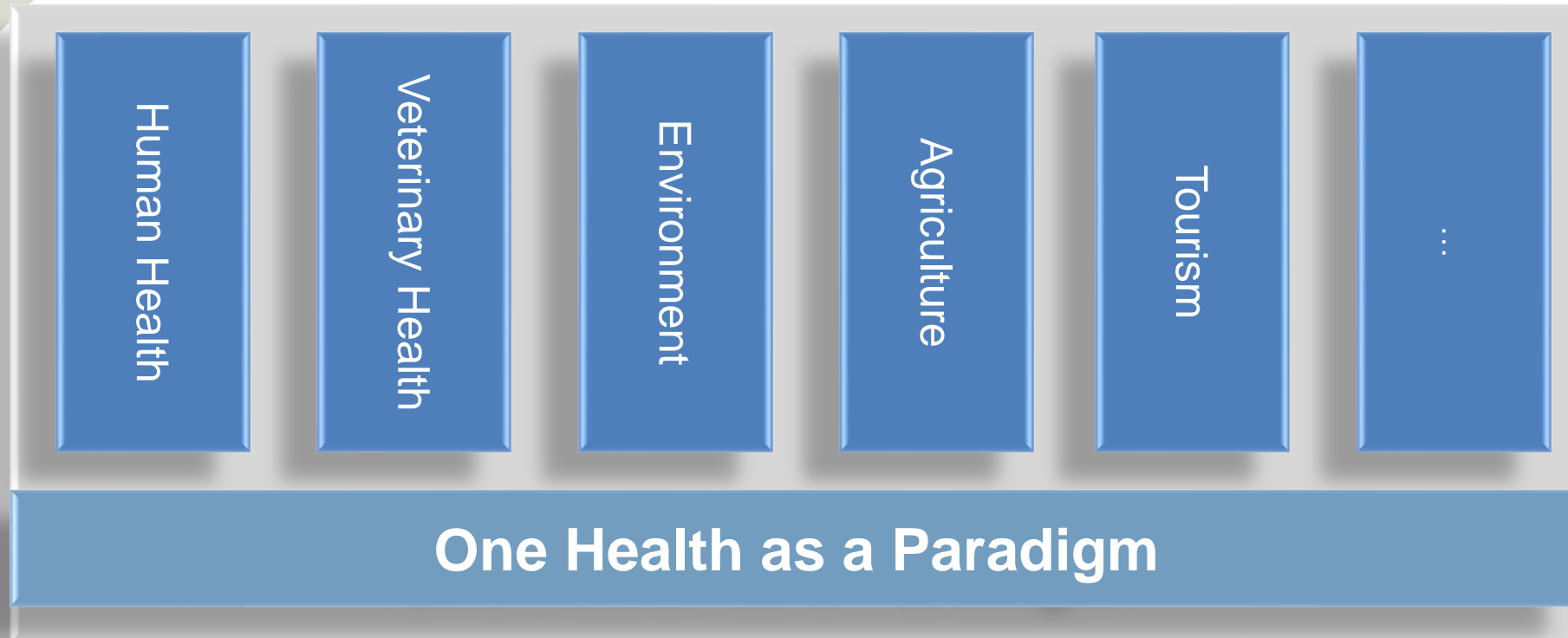
One Health-Region





T!Raum
TransferRäume für die Zukunft von Regionen

*As a regional development strategy
Bringing together all activities with health
relevance: Economy, research, leisure,
environment ...
ONE HEALTH ALWAYS AND EVERYWHERE!
Stimulating information flows in all directions
One Health as a social paradigm*



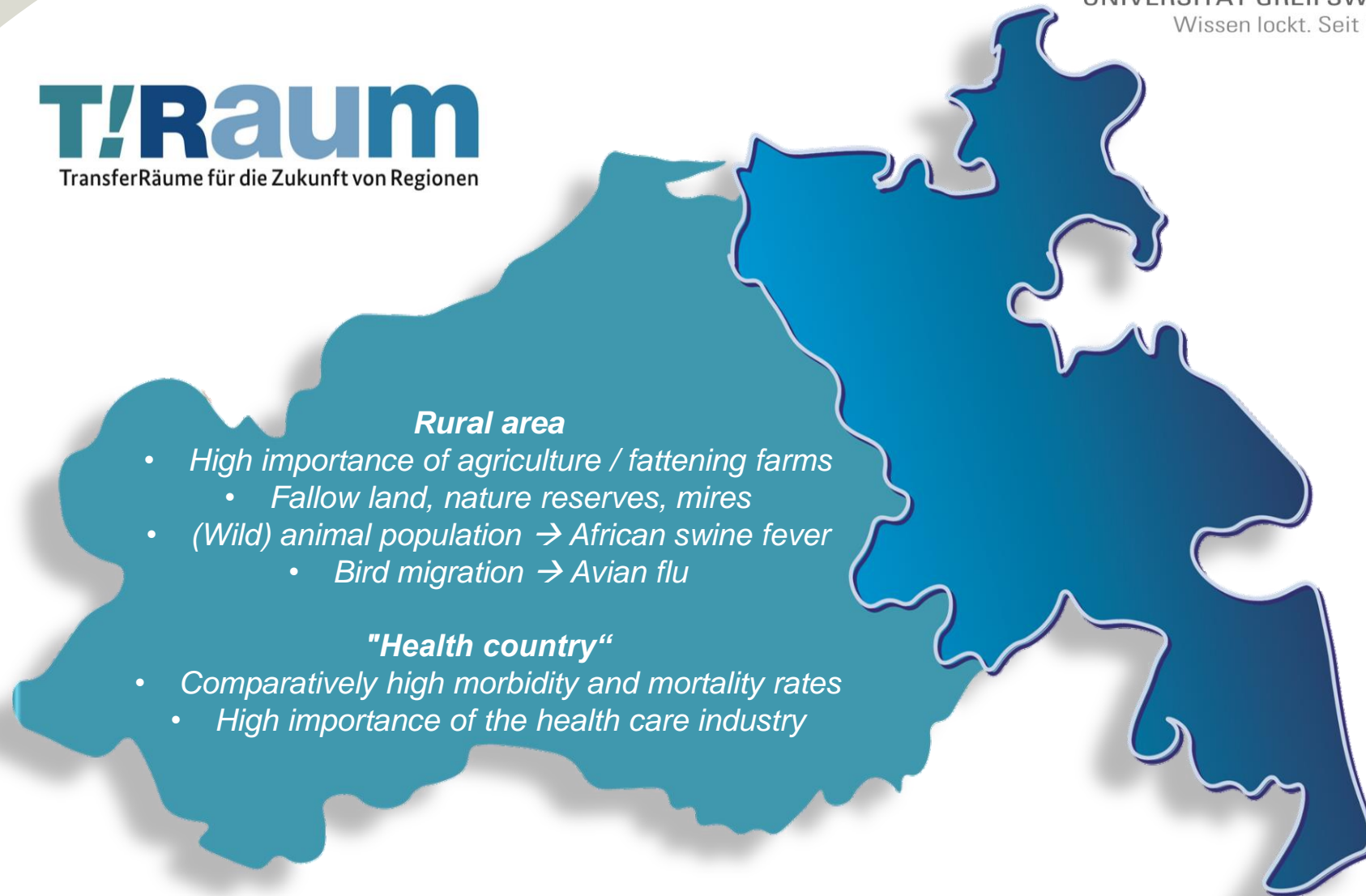
Prevention
Primary Health Care
Health Promotion
Health promoting...
Political responsibility

Health promoting region Vorpommern



T!Raum

TransferRäume für die Zukunft von Regionen



Rural area

- *High importance of agriculture / fattening farms*
 - *Fallow land, nature reserves, mires*
- *(Wild) animal population → African swine fever*
 - *Bird migration → Avian flu*

"Health country"

- *Comparatively high morbidity and mortality rates*
- *High importance of the health care industry*

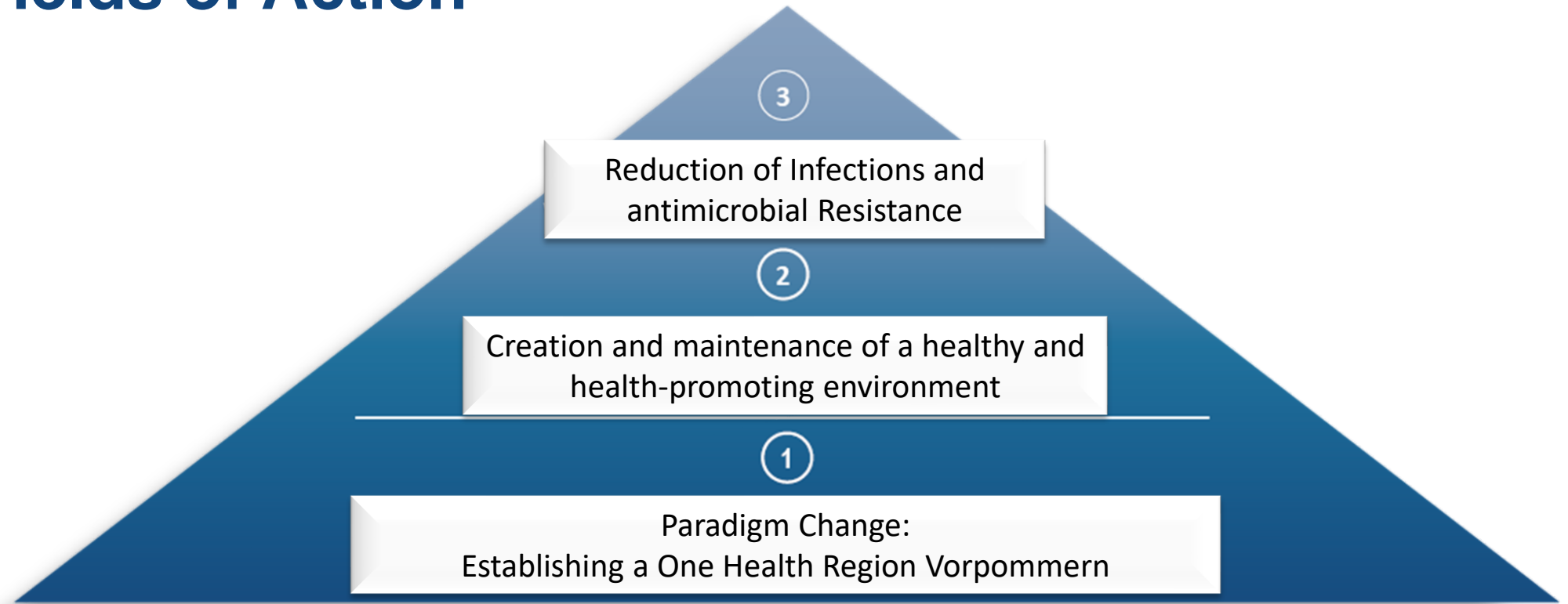


T!Raum
TransferRäume für die Zukunft von Regionen

*"Development of a One Health Region
in the sense of a consistent orientation
of all social and economic activities
towards the goal of the health of the
population in a healthy nature with
healthy social relations and high
quality of life"*



Fields of Action





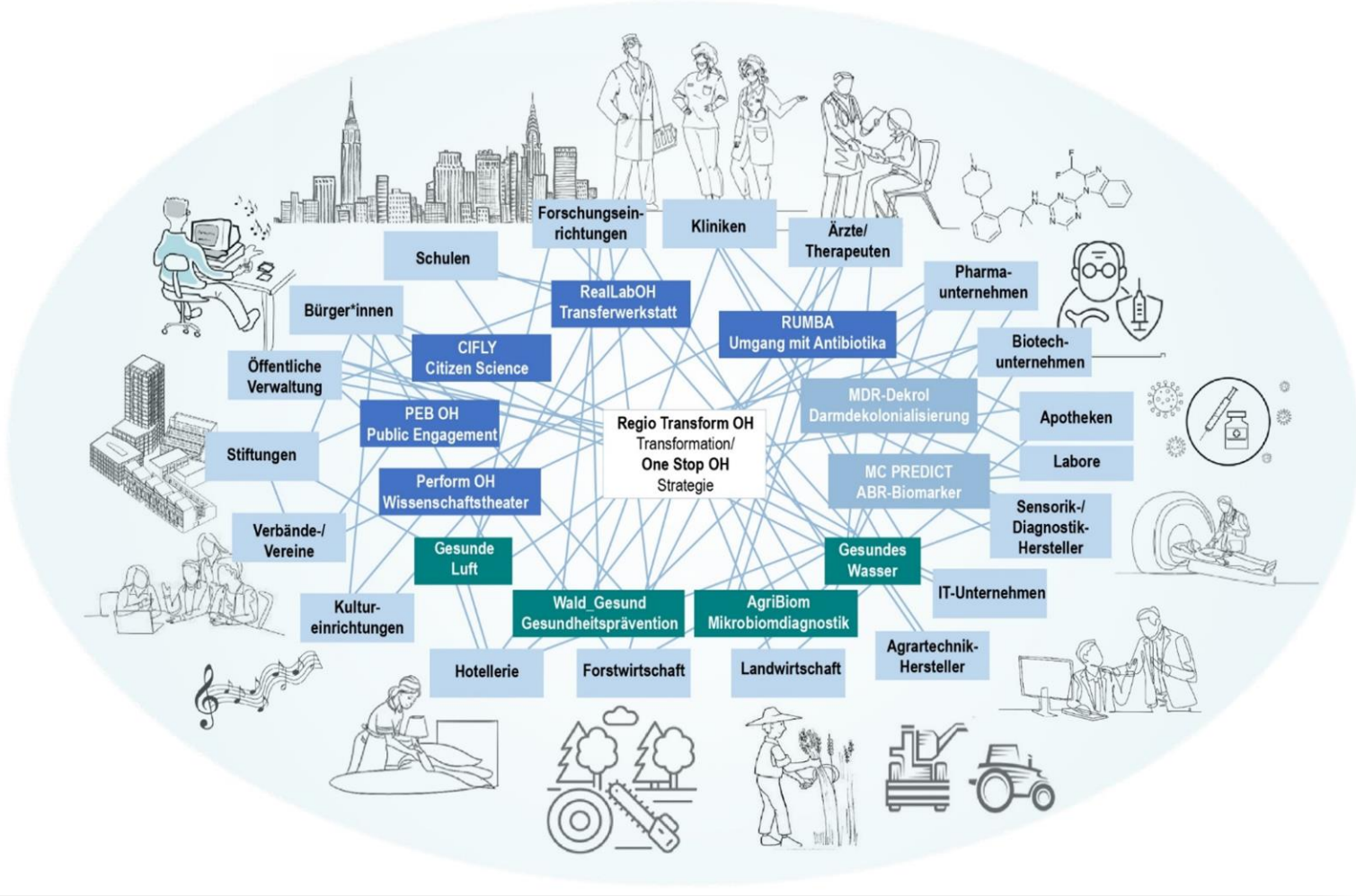
Target Groups

One Health Region Vorpommern
/ Paradigm Change

Healthy and health supporting
Environment

Infections and antimicrobial
resistance

...





Fields of Action & Target Groups

Lenkungsbereich

One Stop One Health
Koordination

RegioTransform
Transformation

One Health Region / Paradigmenwechsel

Gesunde / gesundheitsfördernde Umwelt

Infektionen und Antibiotikaresistenz

FuE-Schwerpunkt

Agribiom
Mikrobiomdiagnostik

RUmBA
Umgang mit Antibiotika

MDR-Dekol
Darm-Dekolonialisierung

MC-Predict
Biomarker Milchkühe

...

Kommunikations-/
Partizipations-Schwerpunkt

Wald I Gesund
Gesundheitsförderung

RealLab OH
Transferwerkstatt

PEB OH
Public Engagement

Perform OH
Wissenschaftstheater

CIFLY
Citizen Science

...





Infections and antimicrobial resistance

- MC-Predict - biomarker for antibiotic resistance
- MDR-DEKOL - Intestinal decolonization of multidrug-resistant pathogens by combined use of natural products, probiotics and vaccines
- CIFLY - Citizen Science project with students to monitor zoonotic reservoirs and antibiotic resistance using flies
- RUMBA - Rational use of antibiotics in the population



Healthy and health supporting Environment

- AGRIBIOM - Healthy Soil, Sick Soil: Establishment of a Standard Diagnostic of the Microbiome of Agricultural Soils
- WALD | GESUND - Healthy forest - Development of a concept for health & prevention in Greifswald's Eldena nature reserve.



One Health Region Vorpommern - Paradigm Change -

- RegioTransform OH - Needs, promoters and barriers for a One-Health-Region Vorpommern
- One Stop One Health - Operational strategy development and implementation
- RealLab OH - Transfer Workshop Animal Welfare
- PEB OH - Public Engagement of Citizens in the Context of One Health
- Perform OH - One Health - Science Theater



T!Raum: Partner

Steering Group



...

Members

- German Center for Cardiovascular Diseases (DZHK)
- Friedrich-Loeffler-Institute for Animal Health Greifswald (FLI)
- Greifswald Agricultural Initiative
- Chambers and associations of physicians, dentists, veterinarians and pharmacists in MV,
- KOMPASS e.V.
- Public health service,
- RinderAllianz
- Schweisfurth Foundation
- Opernale e.V....



Existing Transfer Structures

<p>Research-based cooperation and exploitation</p> <ul style="list-style-type: none"> -Leistungsnetz – Modell für institutsübergreifende Leistungen für den Wissens- und Technologietransfer in regionalen Netzwerken (FBN; Projekt) -Kompass e.V. – MRE-Netzwerk Mecklenburg-Vorpommern - Koordinierte medizinische Versorgung für Patientensicherheit und sektorenübergreifenden Infektionsschutz (UMG) -HICARE– Aktionsbündnis gegen multiresistente Bakterien (UG/UMG; Projekt) -„Ställe der Zukunft - Innovationen für gesunde und glückliche Kühe“: Planung eines "Milchviehstalls der Zukunft" (FBN; Projekt, Infrastruktur) -ANTIRES - Analyse und Reduktion der Bakterienbelastung und Antibiotikabelastung in kommunalen Abwässern (UG, INP; Projekte) -Tierhaltung – Kooperationen innerhalb von Projekten mit regionalen Landwirten (FBN) -Antibiotikaresistenz – Nachweis, Charakterisierung und Diagnostik in der Praxis (UG; Projekte) -Therme One Health Research Center (UG/Therme Group; Public Private Partnership) -Plant³ - Hochwertige Veredlung pflanzenbasierter Rohstoffe (UG; WIR!-Bündnis) -Physics for Food – Innovative physikalische Technologien für Landwirtschaft und Lebensmittelverarbeitung (UG, INP; WIR!-Bündnis) -Vorpommern Connect – Nachhaltige Stadt-Land-Wertschöpfungsketten gestalten (UG, GAI, Projekt) -SHIP NEXT Modul One Health, Ergänzung der humanmedizinischen Study of Health in Pomerania – SHIP – um ein zoonotisches Modul zu Wechselwirkungen zwischen Mensch und Haus-/Heimtier (UMG, FLI; Projekt) 	<p>Infrastructure</p> <ul style="list-style-type: none"> -Z4 – Zentrum für Life Science und Plasmatechnologie (WITENO, Gründungszentrum, Fertigstellung 2022) -Digital Health Hub Greifswald (UMG, WITENO; Kooperation) 	<p>Research and Development for Society</p> <ul style="list-style-type: none"> -FUN – Forschung. Umweltbildung. Naturschutz; (UG; Citizen Science-Projekt) -Greifswalder Agrarinitiative - Kooperationsplattform von Landeigentümern und Landbewirtschaftern zur Entwicklung nachhaltiger landwirtschaftlicher Nutzung (UG, Initiative) 	
	<p>Relationship Management</p> <ul style="list-style-type: none"> -Transferbeauftragter als Schnittstelle zu Wirtschaft und Gesellschaft (UG; Dauerstelle) -Konzeptworkshops T!Raum (UG, UMG, FLI, HIOH, FBN, CEVA u.a.) 	<p>Scientific advice for decision-makers and affected persons</p> <ul style="list-style-type: none"> -Politikberatung (FLI als BMEL-Ressortforschungseinrichtung) -Gremienarbeit der Akteure (Kuratorium Gesundheitswirtschaft M-V, Strategiergruppe I Life Science/ IV Gesundheitstourismus, IHK-Arbeitskreise, Zukunftsrat MV, Boards der Aktionsfelder und Querschnittsthemen der RIS3, intensiver Austausch Universität, Stadt, IHK, Landkreis über gelebte Kooperationsvereinbarungen etc.) 	
	<p>Entrepreneurship</p> <ul style="list-style-type: none"> -StartUP NORD*OST° (UG; Regionales Gründungs-ökosystem; EXIST Potentiale-Projekt) -Healthcare Hackathon Greifswald (UMG, WITENO; Initiative) 	<p>Science Dialogue & Knowledge Transfer</p> <ul style="list-style-type: none"> -Dialog Plant³ gesellschaftliche Transformation zur pflanzenbasierten Bioökonomie (UG; Projekt) -Dialogveranstaltungen #Wissenlocktmich: Uni im Rathaus, Uni in der Region, Nacht der Wissenschaft, Familien-Universität, Kinder und Jugend-Uni (UG; Veranstaltungsreihen) -Jugendforum Bioökonomie (UG, Projekt) -FBN als außerschulischer Lernort (FBN; Infrastruktur, Veranstaltungen) 	<p>Transfer-oriented Teaching & Continuing Education-</p> <p>Kurse/Feldtage für Landwirte zu Moornutzung/Paludikultur (Greifswald Moor Centrum)</p>



T!Raum management for operational strategy development and implementation

Coordination project of T!Raum One Health

(Located at ZFF with 2 FTE positions)

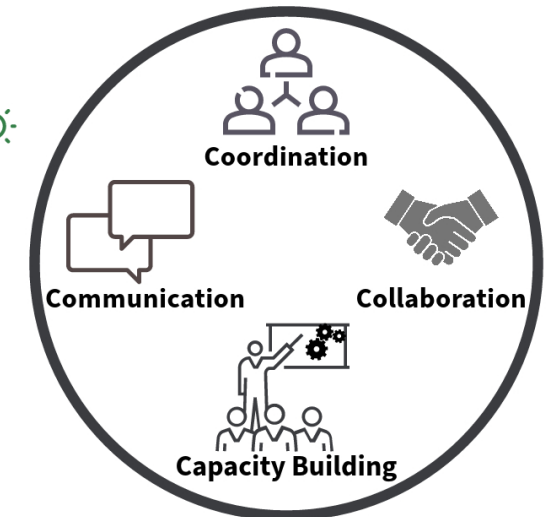
- The One Stop One Health (OSOH) **objectives** are.
 1. raising transfer potentials through cooperative development of transfer projects,
 2. to increase the visibility and acceptance of One Health by means of target-group-specific (scientific) communication,
 3. Organizational coordination and content monitoring of processes and projects in the steering and workshop areas
 4. promotion of the internal transformation of the University of Greifswald and the region in the area of transfer and land use
 5. installation of a visible transfer contact point in the T!Raum One Health



OneStop One Health

Work packages

- (1) Structure building, monitoring and evaluation
- (2) Coordination
- (3) Communication
- (4) Networking
- (5) Transformation





Overall objective

Establishment of a health mainstream based on a comprehensive One Health understanding.

Implementation

Initiate and coordinate a comprehensive participatory transformation process.

Perspective

Thematic expansion to focus areas such as healthy working, healthy building...
Supraregional to international expansion (*Mecklenburg-Vorpommern + partner regions, i.e. Bad Waldsee/ Bodensee, Coimbra/ Portugal, Taiwan/ Vietnam, ...*).



Prof. Dr. Steffen Fleßa

Speaker T!Raum OneHealth
University of Greifswald
Chair of General Business Administration
and Health Care Management
Tel. +49 3834 420 2476
steffen.flessa@uni-greifswald.de



Dr. Stefan Seiberling

Steering Group T!Raum OneHealth
University Greifswald
Center for Research Support and Transfer
Mobile +49 175 5850711
Tel. +49 3834 420 1174
stefan.seiberling@uni-greifswald.de



www.onehealth-region.de



Thank you for listening!



UNIVERSITÄT GREIFSWALD
Wissen lockt. Seit 1456



Susanne Henne
+49 (0)170/ 968 5309
susanne.henne@uni-greifswald.de